



APLP-1 Polyclonal Antibody

Catalog No	YP-Ab-12849
Isotype	IgG
Reactivity	Human;Mouse
Applications	WB;IHC;IF;ELISA
Gene Name	APLP1
Protein Name	Amyloid-like protein 1
Immunogen	Synthesized peptide derived from APLP-1 . at AA range: 360-440
Specificity	APLP-1 Polyclonal Antibody detects endogenous levels of APLP-1 protein.
Formulation	Liquid in PBS containing 50% glycerol, 0.5% BSA and 0.02% sodium azide.
Source	Polyclonal, Rabbit,IgG
Purification	The antibody was affinity-purified from rabbit antiserum by affinity-chromatography using epitope-specific immunogen.
Dilution	WB: 1/500 - 1/2000. IHC-p: 1:100-300 ELISA: 1/10000.. IF 1:50-200
Concentration	1 mg/ml
Purity	≥90%
Storage Stability	-20°C/1 year
Synonyms	APLP1; Amyloid-like protein 1; APLP; APLP-1
Observed Band	72kD
Cell Pathway	Cell membrane; Single-pass type I membrane protein.; [C30]: Cytoplasm. C-terminally processed in the Golgi complex.
Tissue Specificity	Expressed in the cerebral cortex where it is localized to the postsynaptic density (PSD).
Function	domain:The NPXY sequence motif found in many tyrosine-phosphorylated proteins is required for the specific binding of the PID domain. However, additional amino acids either N- or C-terminal to the NPXY motif are often required for complete interaction. The NPXY site is also involved in clathrin-mediated endocytosis.,function:May play a role in postsynaptic function. The C-terminal gamma-secretase processed fragment, ALID1, activates transcription activation through APBB1 (Fe65) binding (By similarity). Couples to JIP signal transduction through C-terminal binding. May interact with cellular G-protein signaling pathways. Can regulate neurite outgrowth through binding to components of the extracellular matrix such as heparin and collagen I.,function:The gamma-CTF peptide, C30, is a potent enhancer of neuronal apoptosis.,miscellaneous:Binds zinc and copper in the extracellular domain. Zinc-
Background	This gene encodes a member of the highly conserved amyloid precursor protein gene family. The encoded protein is a membrane-associated glycoprotein that is cleaved by secretases in a manner similar to amyloid beta A4 precursor protein



cleavage. This cleavage liberates an intracellular cytoplasmic fragment that may act as a transcriptional activator. The encoded protein may also play a role in synaptic maturation during cortical development. Alternatively spliced transcript variants encoding different isoforms have been described. [provided by RefSeq, Jul 2008],

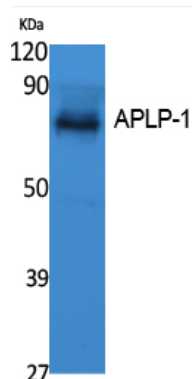
matters needing attention

Avoid repeated freezing and thawing!

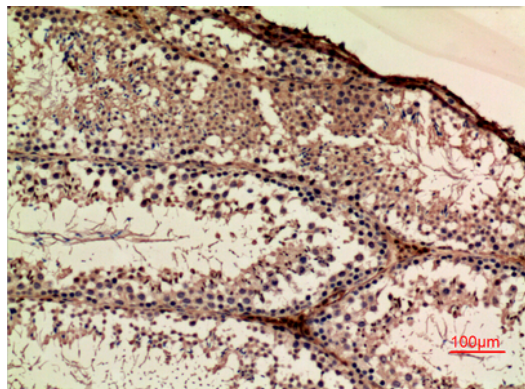
Usage suggestions

This product can be used in immunological reaction related experiments. For more information, please consult technical personnel.

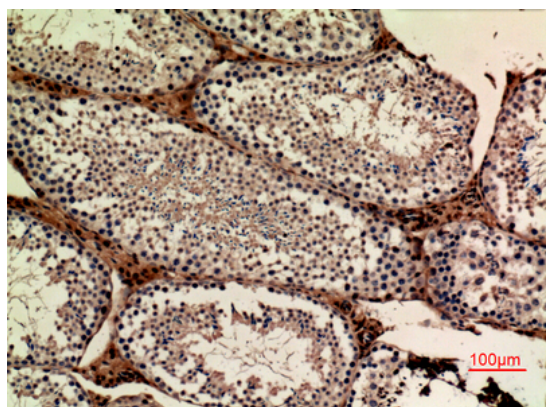
Products Images



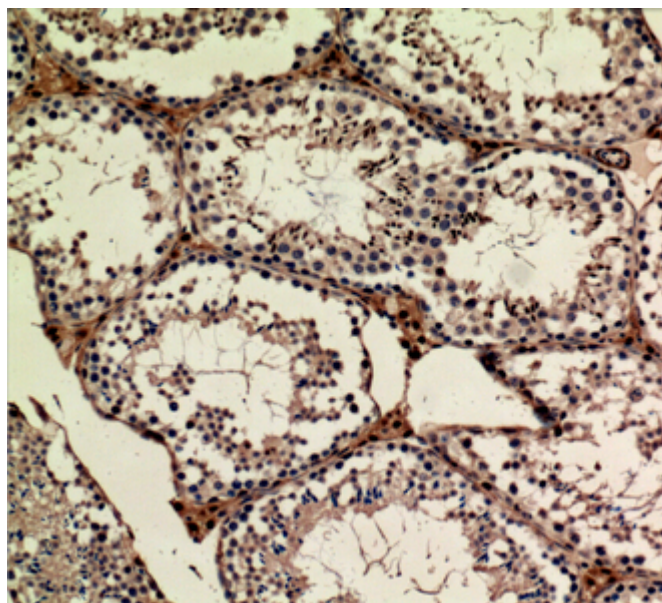
Western Blot analysis of extracts from K562 cells, using APLP-1 Polyclonal Antibody. Secondary antibody(catalog#:RS0002) was diluted at 1:20000



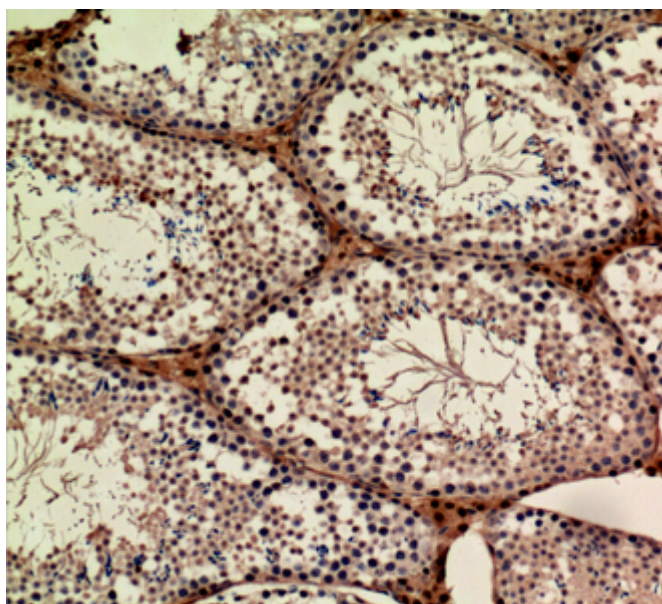
Immunohistochemical analysis of paraffin-embedded mouse-ovary, antibody was diluted at 1:100



Immunohistochemical analysis of paraffin-embedded mouse-ovary, antibody was diluted at 1:100



Immunohistochemical analysis of paraffin-embedded mouse-ovary, antibody was diluted at 1:100



Immunohistochemical analysis of paraffin-embedded mouse-ovary, antibody was diluted at 1:100